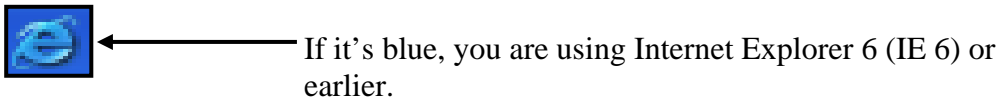
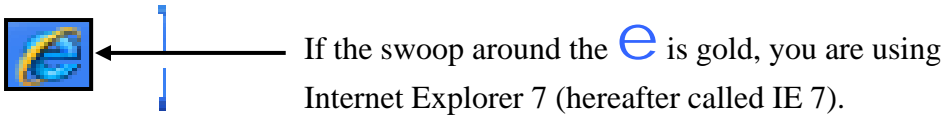


This tutorial covers the differences between Internet Explorer 6 and Internet Explorer 7

Which version of Internet Explorer am I using?

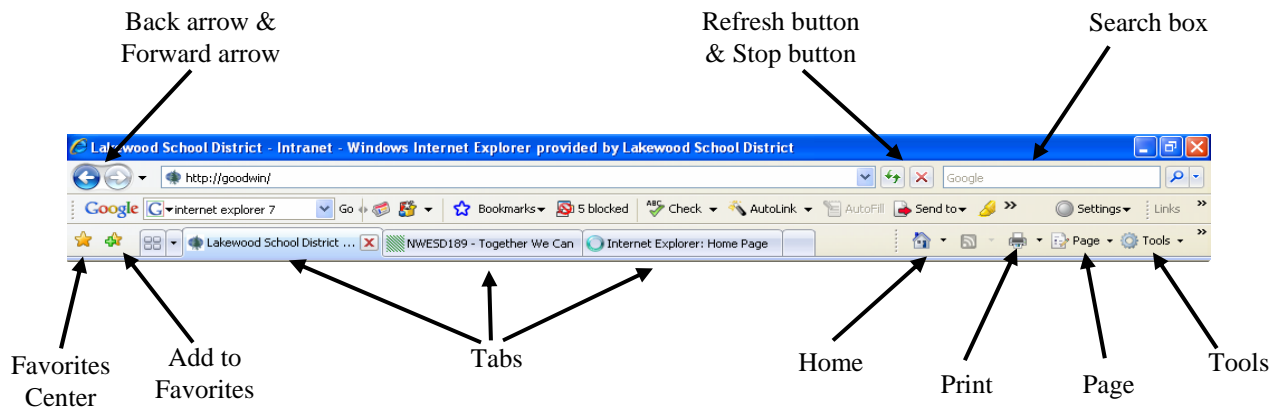
The easiest way to find out which version of Internet Explorer is to open the program and then look at the icon on the task bar:



Note: the icon in the Quick Launch area, if there is one, will have a blue swoosh regardless of which version you are using. The computers in the training lab, and many other computers throughout the district, have IE 7. When you take the Internet competency test, you will use IE 7.

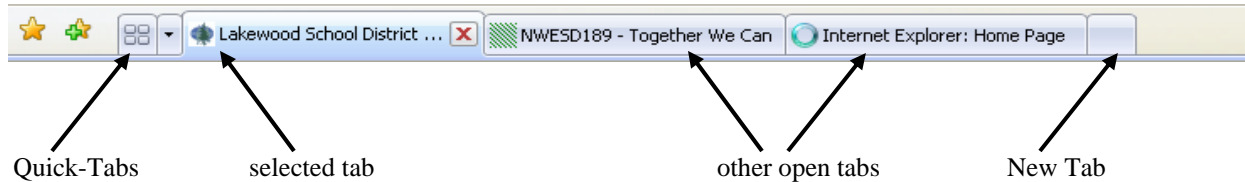
Overview of differences

When you open IE 7, you will immediately notice some differences. Some of these are merely new locations for buttons with which you may already be familiar from using IE 6, such as the Back arrow. Other things, such as tabbed browsing, are completely new to IE 7.



Tabbed Browsing

The most visible change with IE 7 is the introduction of Tabbed Browsing. This allows you to have multiple websites open within one window.

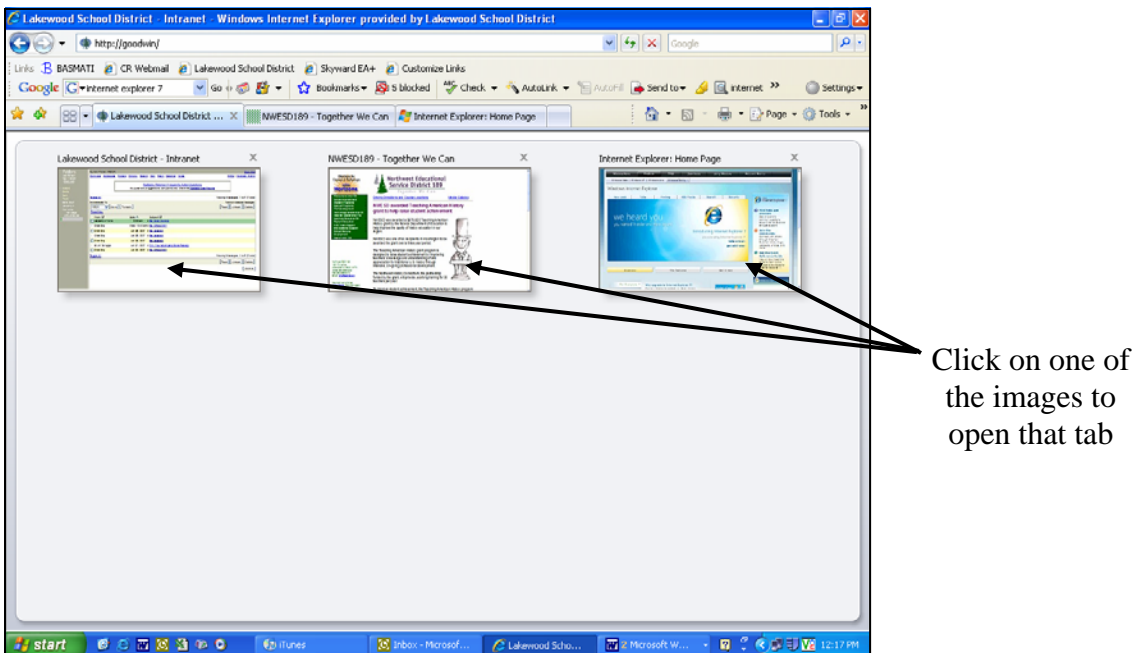


When you open IE 7, your home page will automatically open in the first tab. To open an additional tab, click on the New Tab. As you move your mouse over the New Tab, it will change appearance to show a shiny new tab:



Once you have opened a new tab, you can type in an address in the address bar, navigate to one of your Favorites, or find a website using the Search box. New tabs can also be opened by holding the Ctrl key down on the keyboard when you click on a link; the page you are going to will open in a new tab, while the old page will still be open in its own tab.

If you have more than one tab open, the Quick-Tabs tab will appear. This allows you to see a thumbnail of each tab you have open:



The Favorites Center

Just to the left of the tabs are two icons: a yellow star, and a yellow star with a green plus sign in front of it:



Clicking on the yellow star will open your Favorites Center. The Favorites Center can be pinned so that it is always open, or left unpinned so that it doesn't take screen size away from the web page being displayed. If it is left unpinned, it disappears once you select a link to follow.

unpinned **pinned**

The image shows two side-by-side screenshots of a web browser window. The left screenshot is labeled 'unpinned' and shows the Favorites Center as a separate window that can be closed. The right screenshot is labeled 'pinned' and shows the Favorites Center as a permanent sidebar on the left side of the browser window. Arrows point from text labels to specific parts of both screenshots.

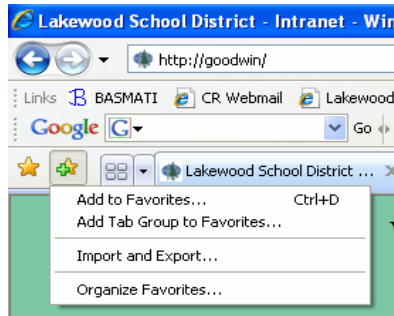
click here to pin the Favorites Center

click here to close the Favorites Center

The Favorites Center can also be used to view your browsing History

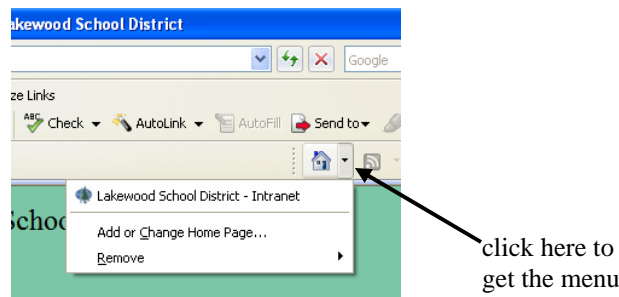
Click & drag the edge of the Favorites Center to adjust how much of the screen width it takes up

The yellow star with the green plus sign in front of it is used to add the current web page to your Favorites and to organize your Favorites:

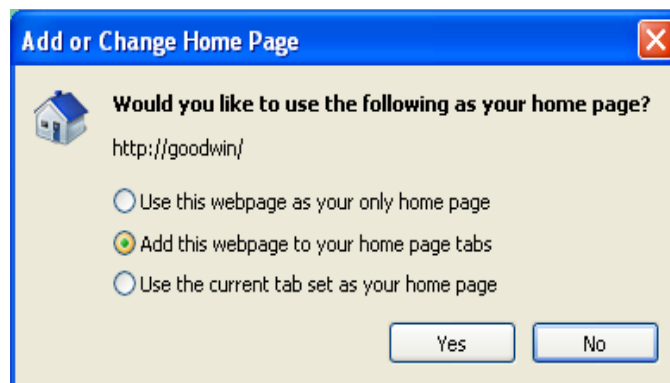


The home page button

With IE 7, it is now much easier to change your home page. Next to the Home button, there is a downward pointing triangle. Clicking on this, brings up a menu of options:



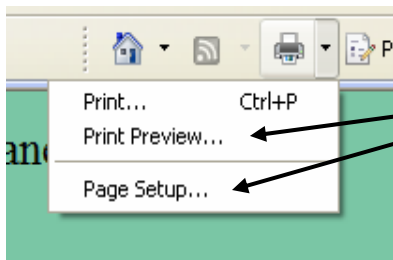
Select “Add or Change Home Page...” from the menu that pops up. You will now get a dialog box that gives you several options.



Because IE 7 allows you to have multiple web pages open at once on different tabs, you can also have multiple home pages (for instance, you could have the district web page, your building’s web page, and your attendance all set up as home pages). When you start IE 7, it will automatically open each of your home pages on its own tab.

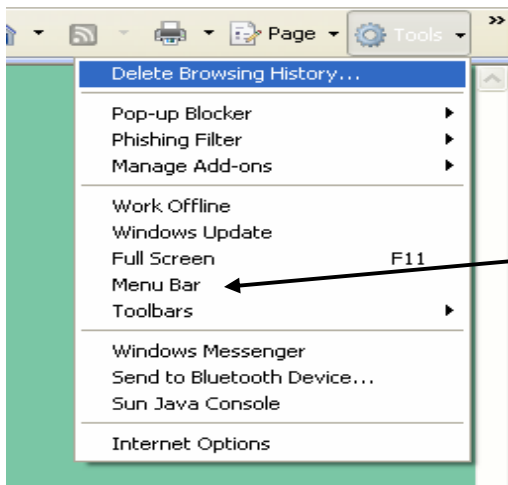
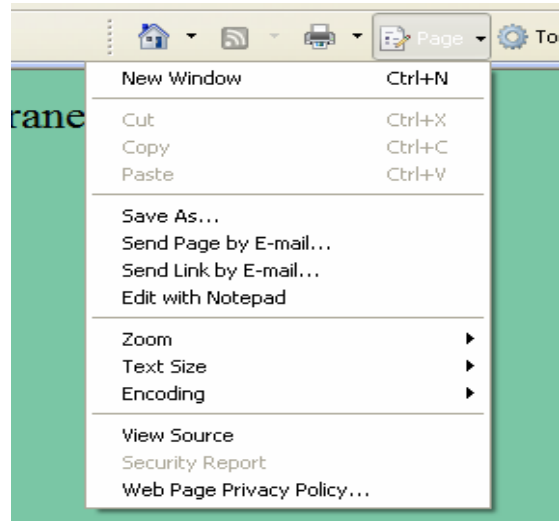
Other buttons that have changed significantly

The Print, Page, and Tools buttons contain many useful functions that used to be available only through the menu bar. Again, click on the downward pointing triangle to get a menu of functions:



Print Preview and Page Setup are available from the Print button

The Page button contains many of the functions that were in the Edit and View menus of IE 6.



If you prefer to have the menus turned on, you can do that through the Tools button.